

SCAFFOLDING



A. N. INDUSTRIES

**LEADING
MANUFACTURER
EXPORTER &
SUPPLIER**



INDEX

1. About Us	01
2. Fact Sheet	02
3. Our landscape	
• Cuplock System	03 - 04
• Highway & Railway Formworks	05 - 06
• Props & Accessories	07 - 09
• Jack & Base Plates	10 - 12
• Formwork Products	13 - 17
• Walkboard & Walkways	18
• Kwikstage Scaffolding	19 - 20
• Frame System	21 - 22
• Pressed Steel Products	23 - 24
• Forged Clamps	25
• Pressed & Forged Product Accessories	26
• Cable Trays	27 - 28
4. Contact us	29

ABOUT A.N. INDUSTRIES

A. N. Industries, are an established name as a manufacturer, exporter & supplier of scaffolding fitting & supporting systems that are extensively used in construction purposes and pipe supporting systems. Our range of tools & equipment are manufactured under the strict guidance of engineers and experts to deliver qualitative range of products.

Our company is led by Mr. Surinder Kumar Aggarwal, whose in depth industrial knowledge and experience has helped us to earn goodwill in the construction industry. Committed to deliver quality, our company also follows the international standards in our range of fittings & systems.

Our streamlined production process, comprehensive quality management and workforce are the backbone of our company's progress. Moreover, to develop a strong and systematic customer network, we endeavor to meet the exacting needs of our clients as per their specifications in support of prompt after-sale services.





Nature of Business

Manufacturer, Supplier, Exporter



Year of establishment

2001



Legal status of firm

Proprietorship



Thorough product testing from

IIT and NABL approved labs



Working for infrastructure projects

Bharatmala Pariyojna, JICA, DFCCIL, DMRC, NHAI, World Bank, ADB, MORTH, CPWD etc



Certificate of Registration

Accredited Certification Services Ltd. (ACS) - ISO 9001:2005

Cup Lock System



Ledgers

CLS 102

self-finished, Painted, Hot dip galvanized

Item code	Size(mtr)	Wt. (kg)
1021	0.60	2.36
1022	0.90	2.42
1023	1.00	3.74
1024	1.20	4.45
1025	1.50	5.40
1026	1.80	6.50
1027	2.00	7.20
1028	2.50	8.91



Vertical standards

CLS 101

self-finished, Painted, Hot dip galvanized

Item code	Size(mtr)	Wt. (kg)
1011	0.50	2.46
1012	1.00	4.95
1013	1.50	7.40
1014	2.00	9.90
1015	2.50	12.42
1016	3.00	14.80

Inside Board Transform

CLS 103

Item code	Size(mtr)	Wt(kg)
1031	1.621	7.50



Decking Beam

CLS 105

Item code	Size(mtr)
1051	1.20
1052	1.80
1053	2.50

Intermediate Transform

CLS 104

Item code	Size(mtr)	Wt. (kg)
1041	0.565	7.50
1042	0.795	3.70
1043	1.200	5.20
1044	1.300	5.50
1045	1.800	7.30
1046	2.500	16.5

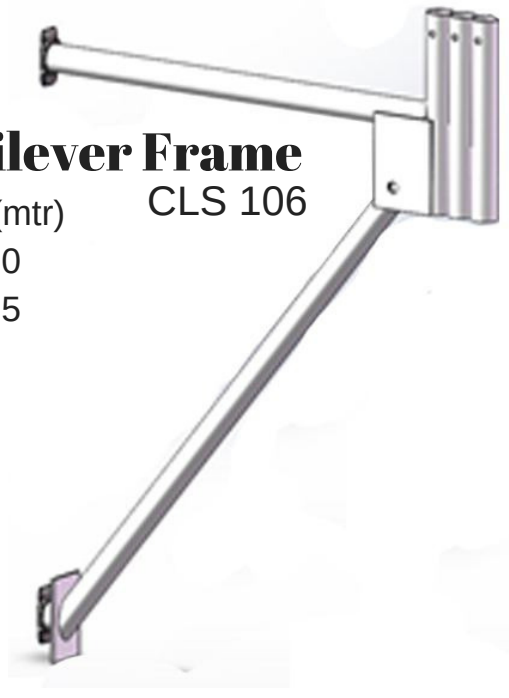




Cup Lock System

Cantilever Frame

size(mtr) CLS 106
1.0
1.5



Drop Head

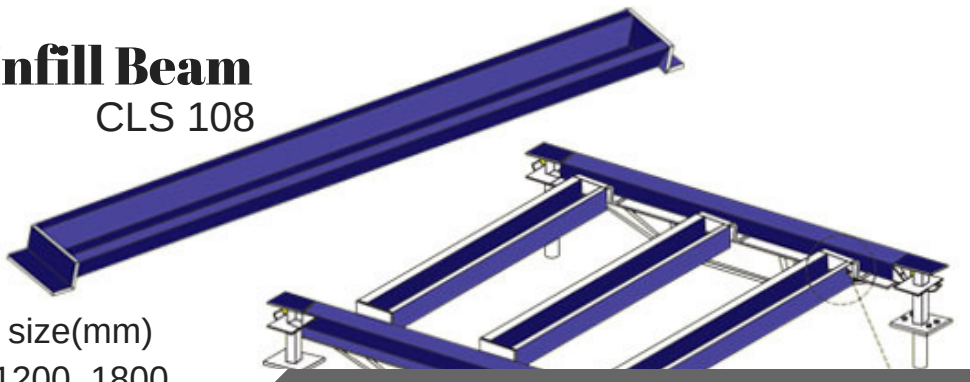
CLS 107



Infill Beam

CLS 108

size(mm)
1200, 1800



Spigot

CLS 109



HIGHWAY & RAILWAY FORMWORK

05

Pier Shuttering



Haunch Plate

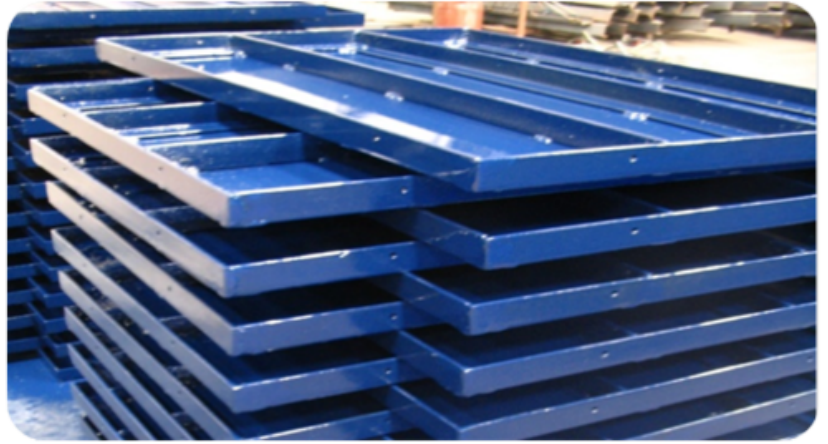
Girder Shuttering



HIGHWAY & RAILWAY FORMWORK

06

Floor Form



Angle Bracket

Crash Barrier
Shuttering





GI Props

Customised as per specification

Item	Size(M)
GI Prop	2.94-5.45
Prop	2.59-3.95
Prop	2.5-4.10
Prop	2.0-3.75
Prop	0.9-1.5



PROP SLEVE

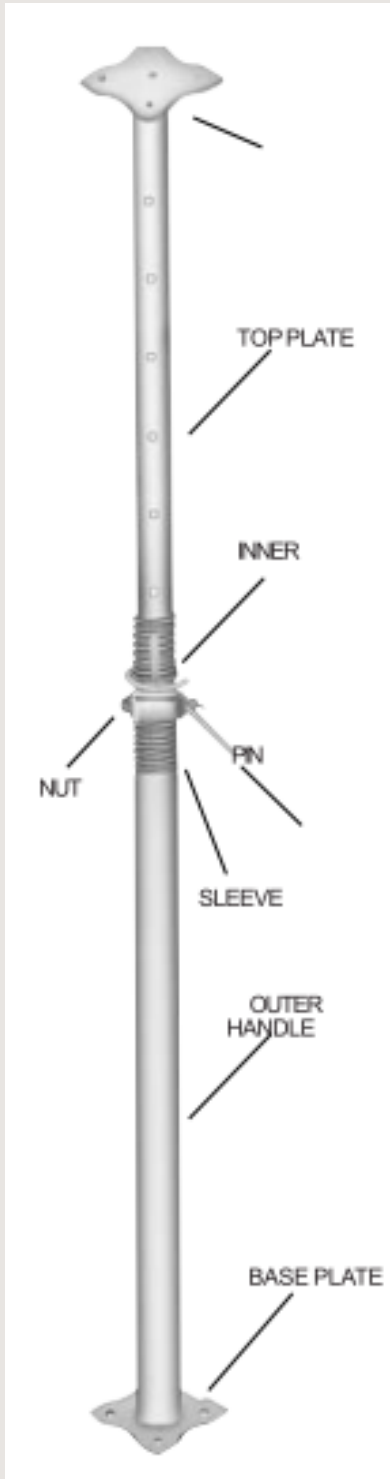


Prop Nut With Handle



Locking Pin





Base Plates



Raker Prop

1.10- 1.60 mtr



JACK & BASE PLATES



Adjustable Base Jack

JBP 101

Item Code	Size(mtr)	Wt. (kg)
1011	0.350/0.250	2.70
1012	0.450/0.350	2.90
1013	0.550/0.450	3.20
1014	0.650/0.550	3.50
1015	0.750/0.650	3.80

Adjustable Universal Jack

JBP 102

Item Code	Size(mtr)	Wt. (kg)
1021	0.350/0.250	1.60
1022	0.450/0.350	1.90
1023	0.550/0.450	2.20
1024	0.650/0.550	2.50
1025	0.750/0.650	2.80



Adjustable Head Jack

JBP 103

Item Code	Size(mtr)	Wt. (kg)
1031	0.350/0.250	3.00
1032	0.450/0.350	3.30
1033	0.550/0.450	3.60
1034	0.650/0.550	3.90
1035	0.750/0.650	4.21



JACK & BASE PLATES

JBP 104

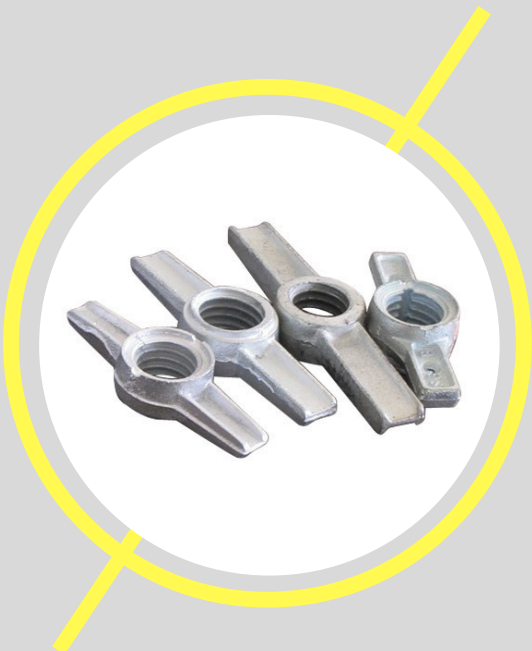


U- Head
Customized

Base Plates

JBP 105

Item Code	Size(m3)	Pipe/Strip size(mm)
1051	150*150*6	P: ϕ 48.3, H 100
1052	150*150*2.5	S: W25, H50
1053	150*150*2.5	P: ϕ 27.3, H50



Jack Nut
JBP 106

JACK & BASE PLATES



Fork Jack Head

JBP 107



Solid Base Jack

JBP 108



Solid U-Head

JBP 109

U-Head

JBP 110



Swivel Base Jack

JBP 111



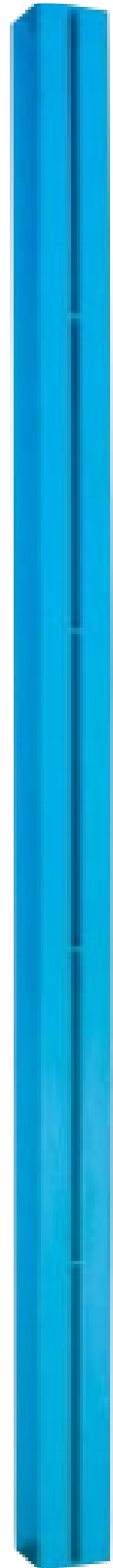
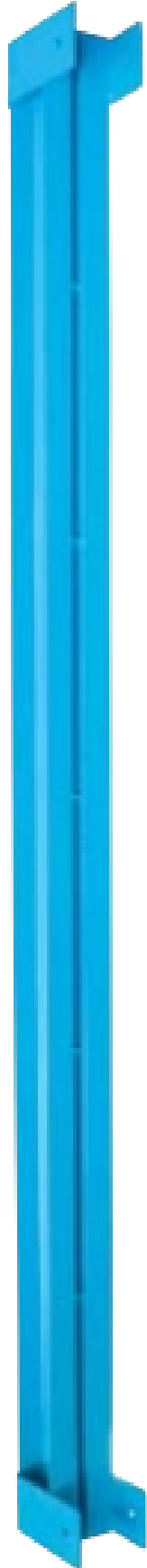
FORMWORK PRODUCTS



**Light Duty
Waler**

**Size: 1800, 2400,
3000mm**

Primary Duty Waler Wall Waler
Size: 1800, 2400, Size: 1200, 1800,
3000mm 2400mm



Longitudinal Waler

**Size: 1800, 2400,
3000mm**



Shutter Plates

Size: 1200*600, 1200*600,
900*900, 900*600, 900*300



Span

Size: 2.46 - 4.15m



Floor Form

Customised: as per
specification



Floor Form

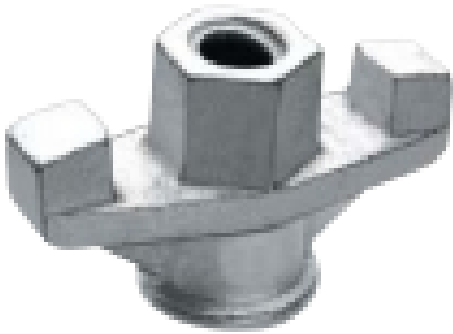
Customised: as per specification

Heavy Duty

Soldiers

Customised:
2400, 3000mm





Wing Nut FWP-101

Material : Malleable Cast Iron
 Weight : 0.300kg
 Working Load : 90KN



Two Wing AnchorNut FWP-102

Material : Malleable Cast Iron
 Weight : 0.400kg / 0.590kg
 Size : dia 70mm / 100mm



Three Wing AnchorNut FWP-103

Material : Malleable Cast Iron
 Weight : 0.640kg
 Size : 100mm



Water Barrier with Disc FWP-104

Material : Malleable Cast Iron
 Weight : 0.540kg
 Size : 116mm length



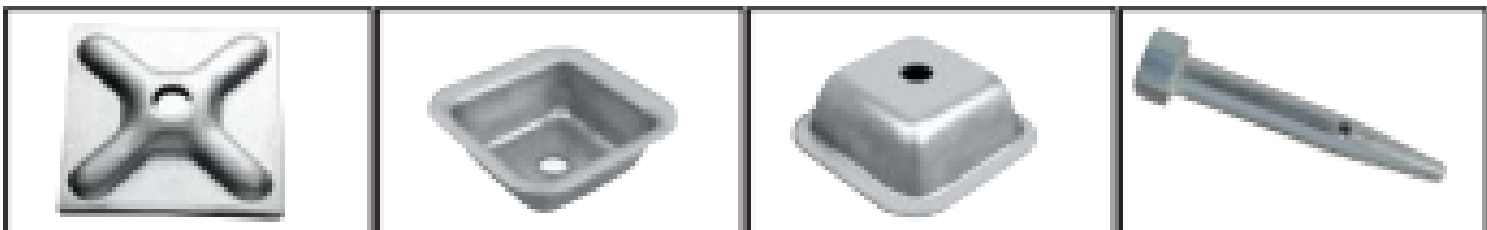
Tie Bar Connector FWP-105

Material : Mild Steel
 Weight : 0.450kg
 Size : 100mm length



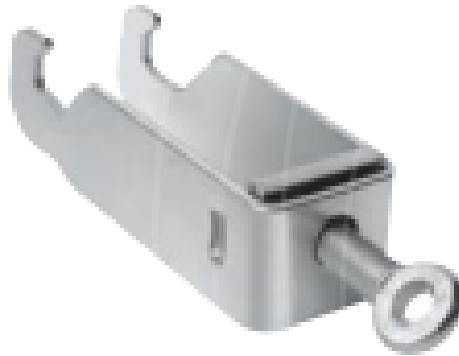
Steel Cone FWP-106

Material : ST37
 Weight : 0.600kg
 Size : 90mm length





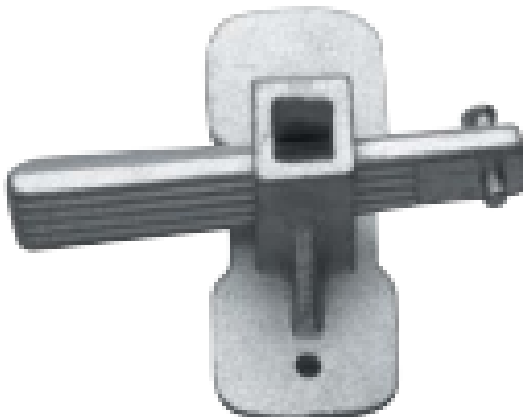
A-Clamp FWP-107



B-Clamp FWP-108



C-Clamp FWP-109



Wedge Clamp FWP-110

Material : High Quality Steel
(casted body and forged wedge)
Weight : 0.380kg
Size : dia 4 - 10 mm

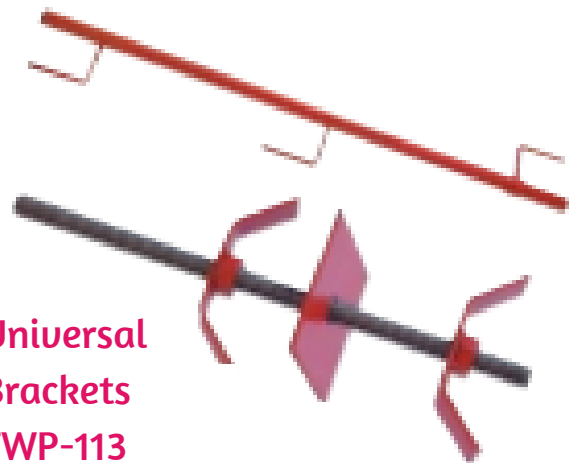


Cold Roll Tie Rod FWP-111

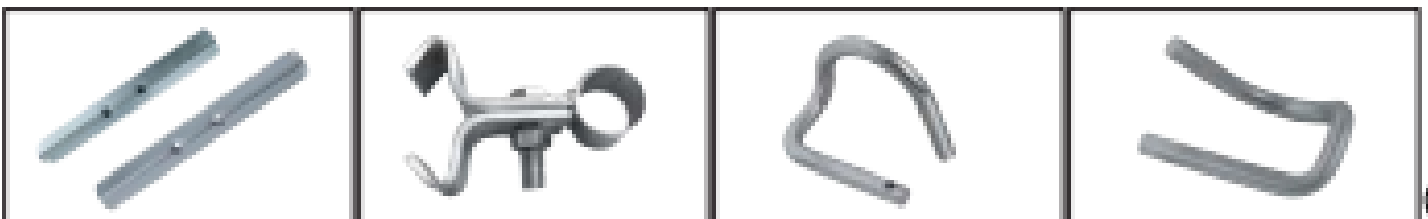
Material : MSLC/EN-8
Weight : 1.47kg/m
Size : dia 15mm. up to 6mtr length
Working Load : 90KN



Hinges and Brackets FWP-112



Universal Brackets FWP-113





Double Head
Jack



Swivel Prop
(customised)



Column's
(customised as per specification)





Walk Board A

Sheet & HR Flat Fittment with
48 Dia Pipe

Size(M): 1.2, 1.8, 2.0, 2.5



Walk Board B

Size(M): 1.2, 1.8, 2.0, 2.5



Walk Board C

Size(M): 1.2, 1.8, 2.0, 2.5

KwikStage Scaffolding



Vertical Standards QLS 101

(self finish, painted, hot dip galvanized)

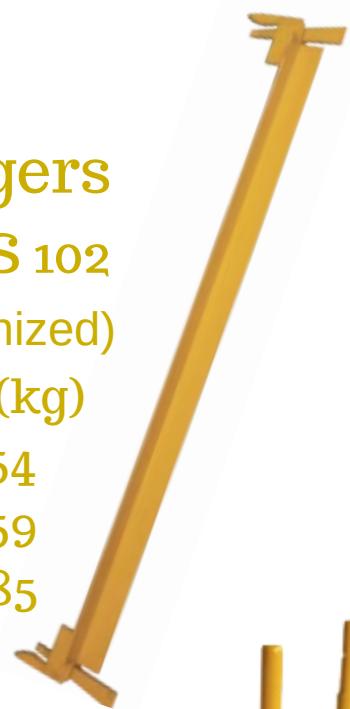
item code	Size(M)	WT.(kg)
1011	1.0	6.21
1012	2.0	11.70
1013	2.5	14.40
1014	3.0	17.20

Ledgers

QLS 102

(self finish, painted, hot dip galvanized)

item code	Size(M)	WT.(kg)
1021	1.2	5.54
1022	1.8	6.59
1023	2.4	8.85



Vertical Standards

item code	Size(M)	WT.(kg)
1031	0.8	5.90
1032	1.2	9.70
1033	1.8	13.10



Face Brace - Painted , Galvanised

QLS 104

item code	Size(M)	WT.(kg)
1041	2.74	10.90
1042	3.54	9.70

Tie Bar
Painted, Galvani
QLS 105

item code	Size(M)	WT.(kg)
1051	1.245	2.34
1052	1.803	5.82
1053	2.413	9.54



Tie Bar- Painted, Galvanised

QLS 106

item code	Size(M)	WT.(kg)
1061	0.243	2.34
1062	0.510	5.82
1063	0.738	9.54



Guiding Pin



Wedge



U-Clip



V-Presings

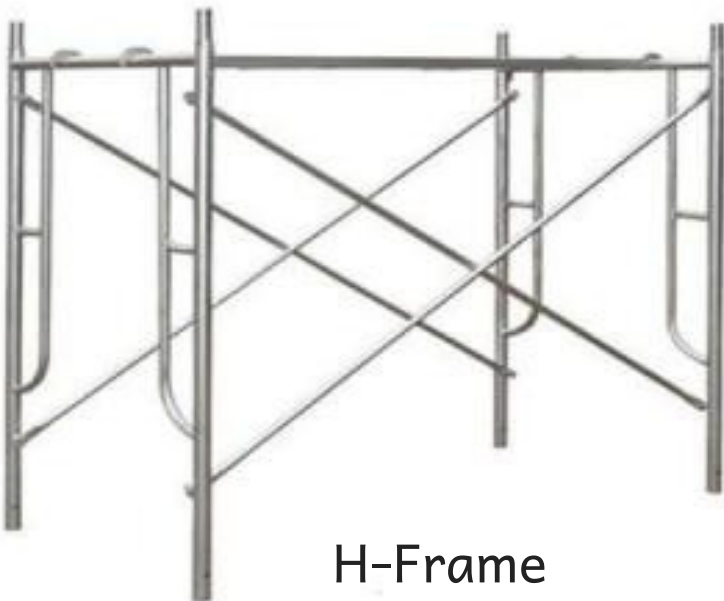
FRAME SYSTEM



Light Duty H-Frame
(With Safety Railing)



H-Frame
(Customised)

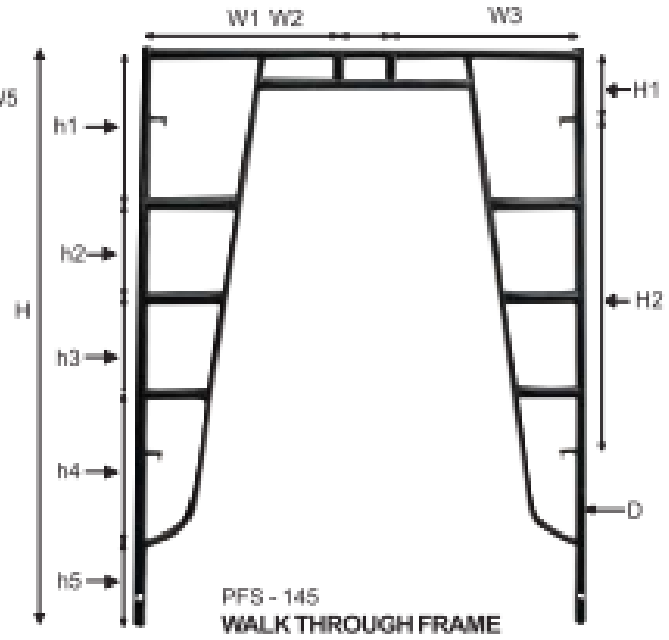
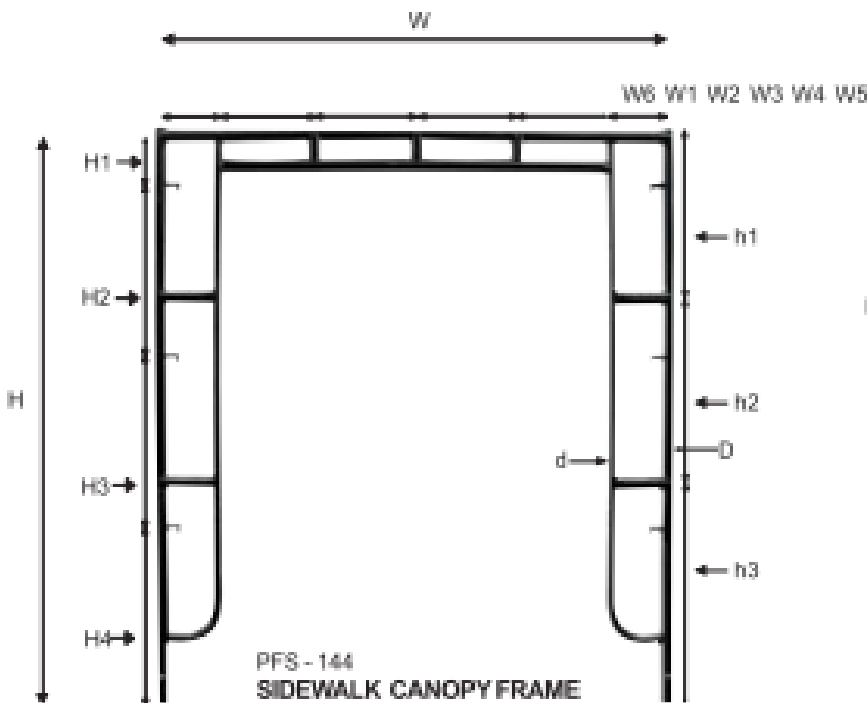
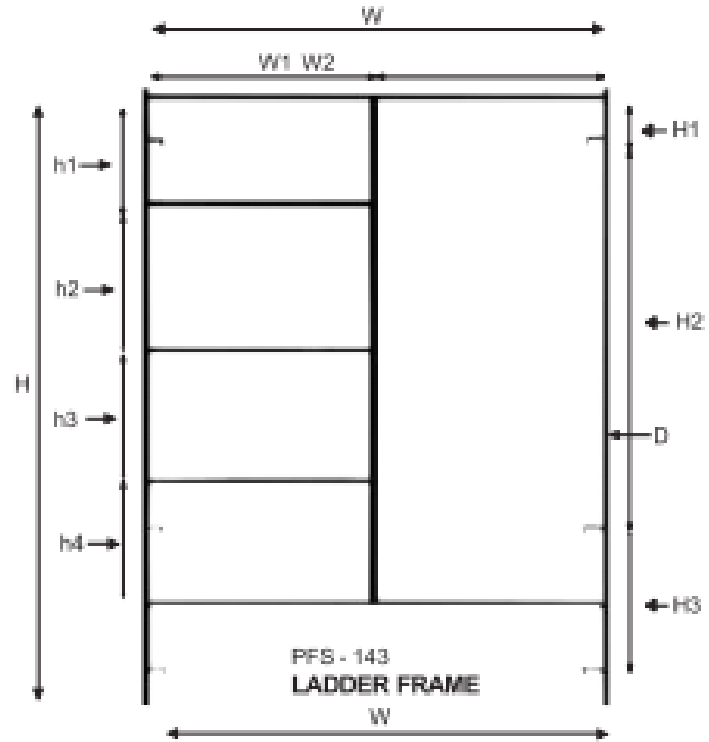
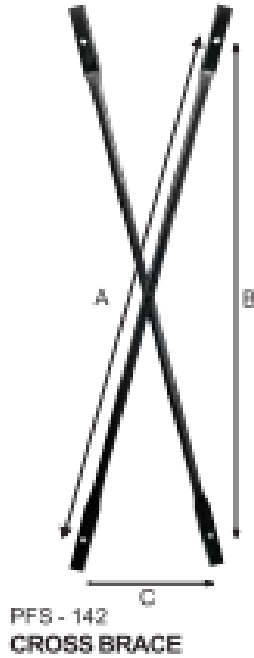
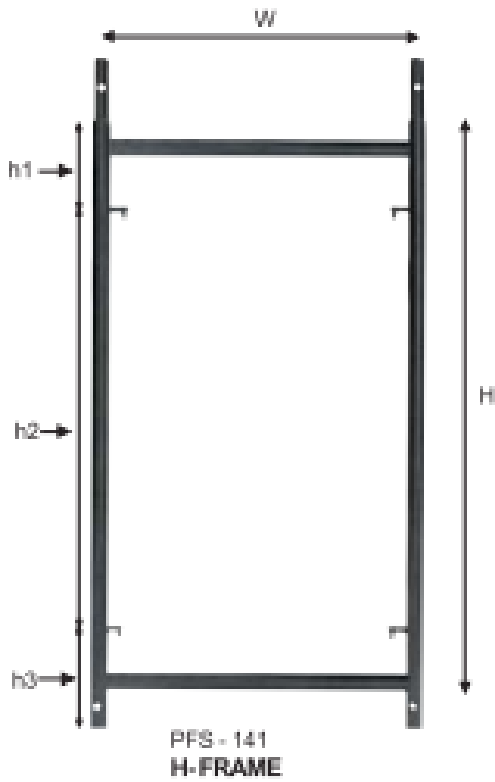


H-Frame
(Hot Dip Galvanised)



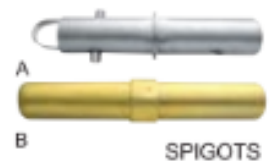
Edge Protection
Clamp
(SIZE: 1296*1500mm)

FRAME SYSTEM



Accessories

(Customise to Match)*



PRESSED STEEL PRODUCTS

For pipe OD 48.3mm
(ES 74) / (BS 1139)



Double Coupler PC-101



Swivel Coupler PC-102



Dual Purpose Double Coupler PC-103



Dual Purpose Swivel Coupler PC-104



Sleeve Coupler PC-105



Joint Pin PC-106

PRESSED STEEL PRODUCTS



Girder Coupler
PC-107
For pipe OD 48.3mm
(AS-1576.2)



Putlog Coupler
PC-108
For pipe OD 48.3mm
(EN-74/ BS 1139)



Fencing Coupler PC-109
For pipe OD 48.3mm/48.3mm



Putlog Head Adapter
PC-110
For pipe OD 48.3mm
(EN-74/ BS 1139)



Staircase Coupler PC-111
For pipe OD 48.3mm (BS 1139)

Toeboard Bracket
PC-112
For pipe OD 48.3mm
(BS 1139)



FORGED CLAMPS



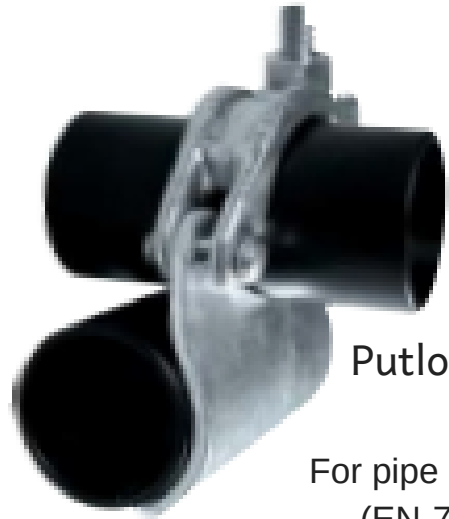
Double Coupler
FC-101
(EN-74/ BS 1139)



Swivel Coupler
FC-102
(EN-74/ BS 1139)



Girder Coupler FC-103
For pipe OD 48.3mm
(AS-1576.2)



Putlog Coupler
FC-104
For pipe OD 48.3mm
(EN-74/ BS 1139)



Sleeve Coupler FP-105
For pipe OD 48.3mm
(EN-74/ BS 1139)



Dual Purpose
Swivel Coupler
PFP-106
For pipe OD 60.3mm/48.3mm
(EN 74 / BS 1139)

PRESSED AND FORGED PRODUCTS ACCESSORIES



SPARE FORGED CAP



SWIVEL COUPLER BODY



DOUBLE COUPLER BODY



HEX - BOLT



FORK - BOLT



TEE - BOLT



I - BOLT & FLANGE NUT



EYE - BOLT



HEX NUT & WASHER



CAP RIVETS



HEX - BOLT



FORK - BOLT



EYE - BOLT



HEX NUT & WASHER



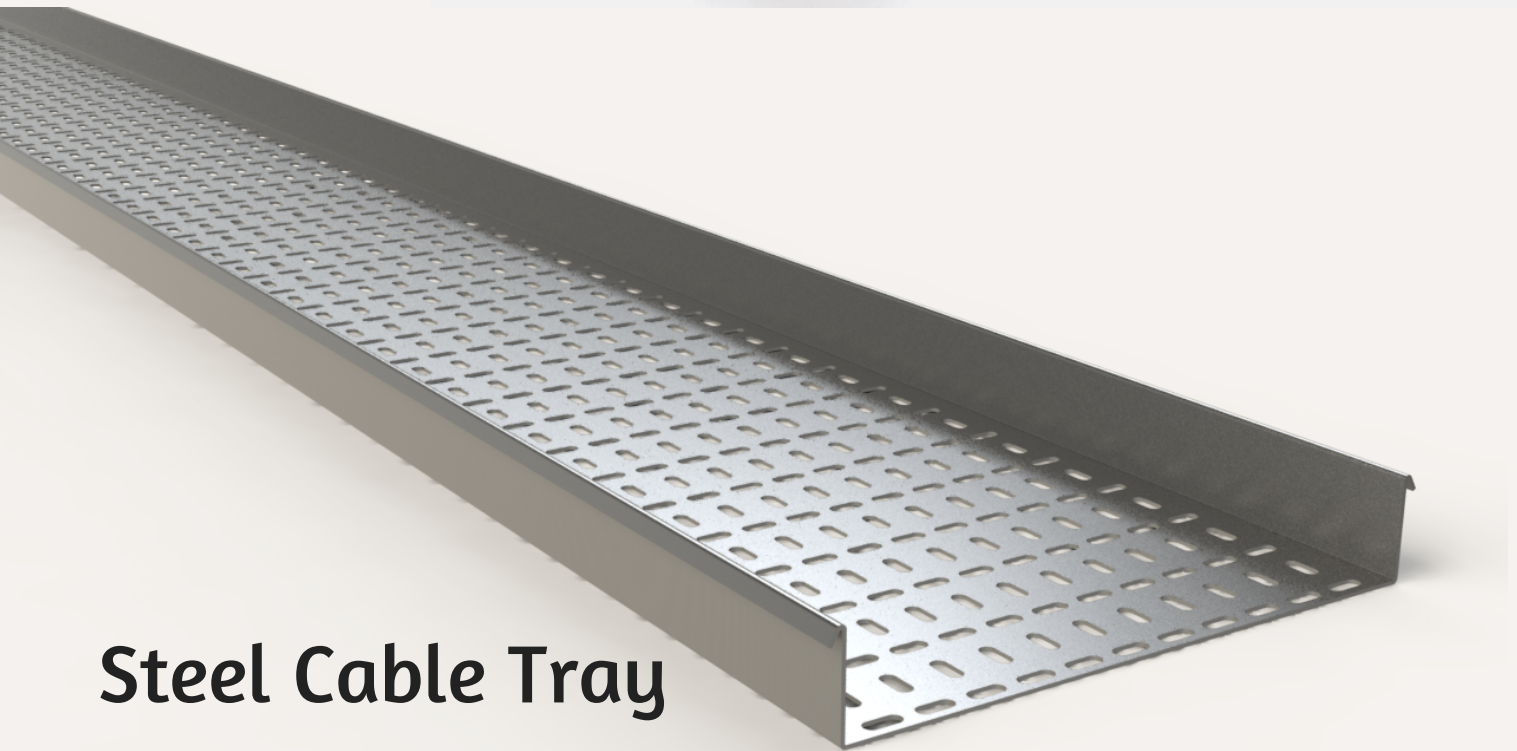
FLANGE NUT

CABLE TRAYS

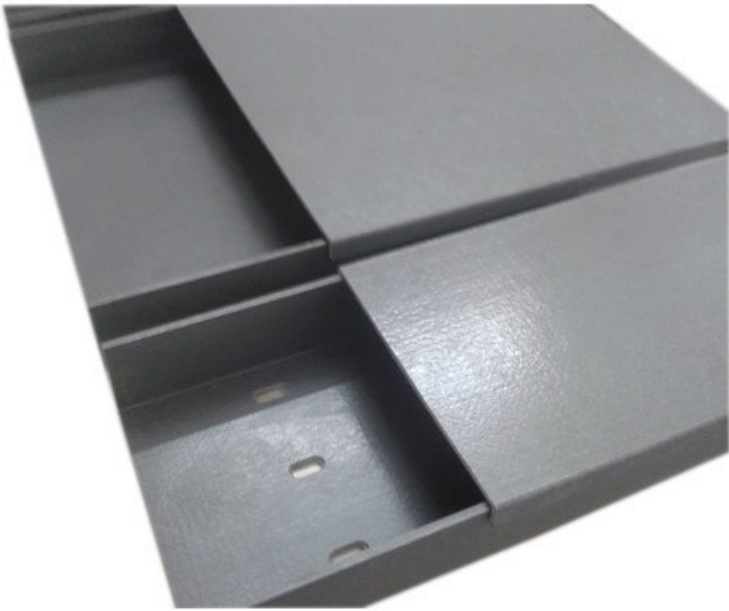
**Powder Coated Cable
Tray**



Steel Cable Tray



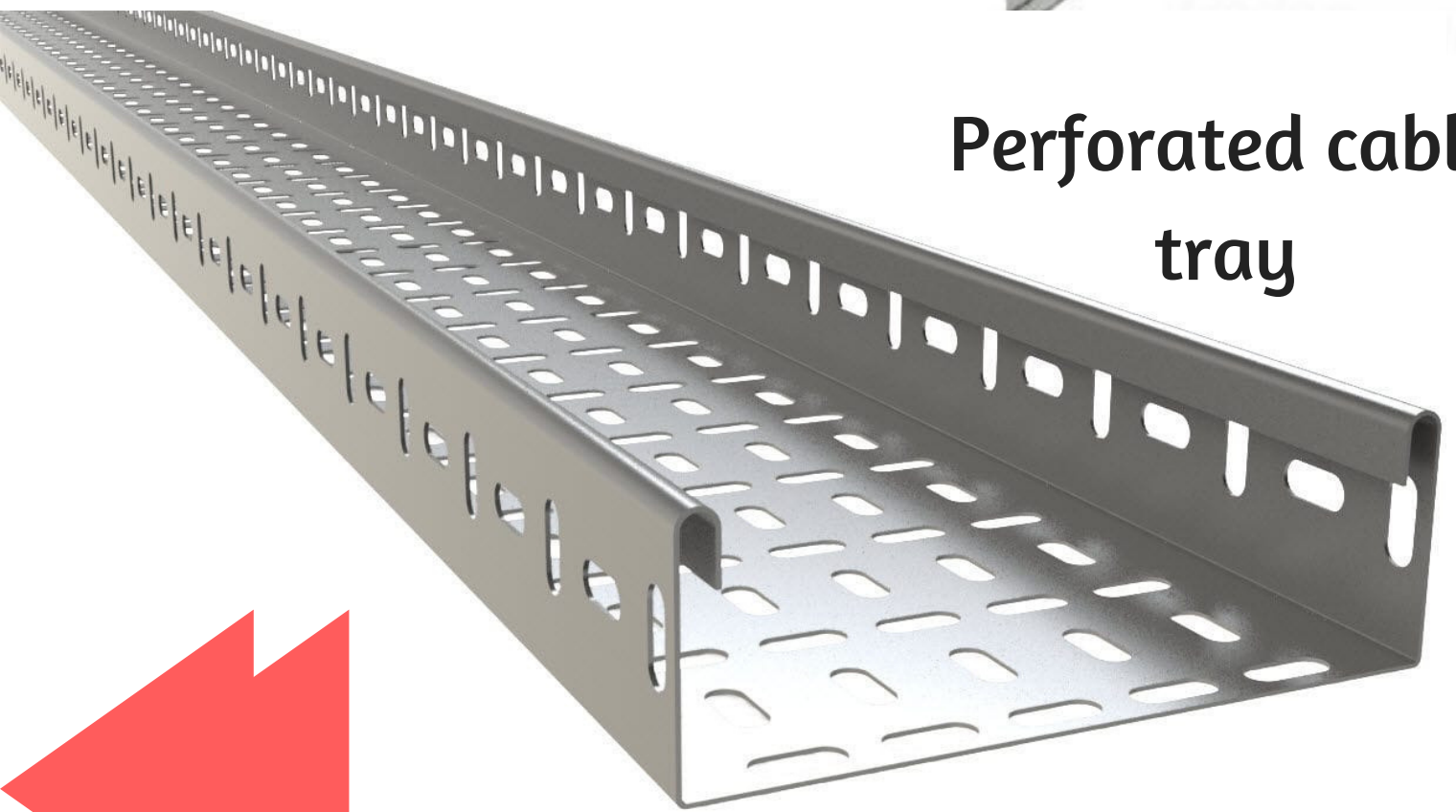
GRP Cable Tray



Ladder cable tray



Perforated cable tray



CONTACT US:

A.N. Industries

**Corporate Office & Works unit 1: Plot No. 265,
Ind Area, Phase 2, Panchkula - 134113, (Harayana)**

Mobile: 7696471769

Fax: 0172-5066418

email: info.anindustries@gmail.com

**Works Unit 2: Plot No. 6, Vill. Morthikri,
Ind. Area, Derabassi - 140508, Mohali(Punjab)**

**Works Unit 3: Plot No. 12-A, Shuttering Market,
Near Bouli Sahib Gurudwara, Dhakoli 140603,
Zirakpur, Mohali(Punjab)**

**www.anformworks.com
www.indiamart.com/aggarwalsteelindustry**